



+ Glufosinate



Application Flexibility. Weed Control Certainty.

Put Enlist One® herbicide + glufosinate to work for you on Enlist E3® soybean and Enlist® cotton acres. With multiple sites of action working together to control glyphosate-resistant weeds, you can maximize the value of the tolerances in the Enlist trait. Adopt a zero-tolerance policy on weeds with Enlist One + glufosinate.

How It Works

Enlist E3 soybeans and Enlist cotton are tolerant to 2,4-D choline in Enlist herbicides and to glufosinate. With a tank mix of Enlist One + glufosinate, you get effective postemergence control on tough broadleaves like waterhemp and Palmer amaranth, plus broad-spectrum control of a host of other weed species.

The flexibility of Enlist One herbicide lets you customize a program approach to weed control that includes tank-mixing with glufosinate. And because of the inherent stability of 2,4-D choline, adding glufosinate in the tank with Enlist One does not increase the potential for volatility due to acidification.

More Effective Sites Of Action On Enlist® Crops

Herbicide	Active Ingredient	Site Of Action
Enlist One® herbicide	2,4-D choline	Group 4
Glufosinate	Glufosinate	Group 10

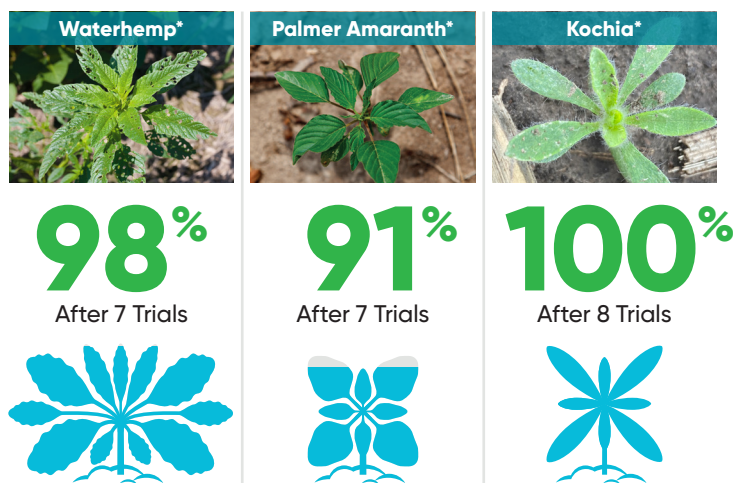
Enlist One and glufosinate can be applied in a tank mix or as sequential passes on Enlist E3 soybeans and Enlist cotton.

Tank-Mix Of Enlist One® Herbicide + Glufosinate

Enlist® Crop	Application Window
Enlist E3® Soybeans	Through R1 growth stage
Enlist® Cotton	Up to first white bloom

Wide application window — apply on your own schedule; no days after planting restriction.

Enlist One + Glufosinate Weed Control Facts:



Weed Control†

* May require a broader management plan including timely application and use of a soil residual herbicide.

† According to internal 2020 Corteva Agriscience weed control field trials on Enlist E3 soybeans following a pre-emergence application. Weed control percent gathered 28 days after application (DAA)

Tank-Mix Optimization

Rates:	Enlist One® herbicide	2 pt/A (32 oz)
	Glufosinate	32 oz/A

Weed Height: 3 inches tall or less

Carrier Volume: **Recommended:** 20 GPA
Min requirement: 15 GPA
with tank mix of Enlist One + glufosinate.

Adjuvants: **AMS: 1.5 – 3 lb/A**
May be any combination of qualified dry AMS, liquid AMS or AMS-containing products found on EnlistTankMix.com

Qualified Nozzle Selection: Use nozzle and corresponding spray pressure from the qualified list for Enlist One
Optimize coverage with qualified nozzles by using less coarse nozzle and higher operating pressure

Weather: **At Spray:** Avoid low humidity and cloudy conditions

Spraying Time: Between 2 hours after dawn and 2 hours before sunset

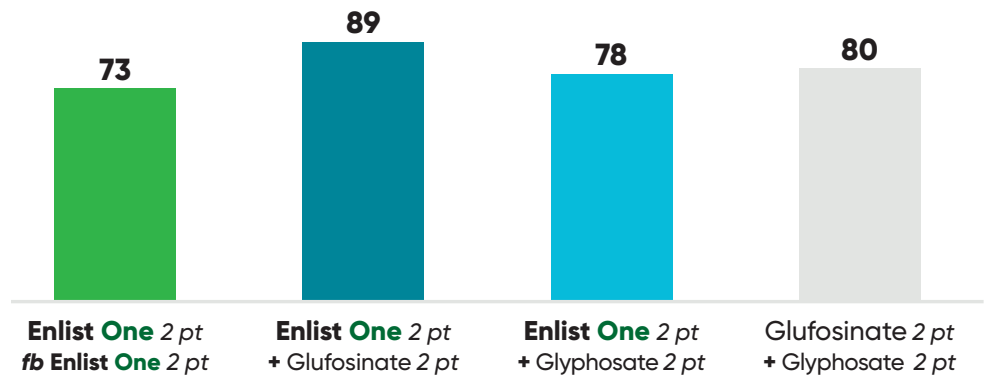
Wind Speed **Max:** 10 mph

Use A Tank-Mix Of Enlist One® Herbicide + Glufosinate As Part Of A Complete Program Approach For Season-Long Weed Control:

- Start clean with a burndown or tillage
- Use up to two postemergence applications each of Enlist herbicides and glufosinate
- Use effective preemergence residual herbicides
- Spray postemergence when weeds are small: 3 inches tall or less

2020 Enlist POST Options

Dr. Larry Steckel - WTREC | Jackson, TN | Palmer amaranth control at 2 WAA-A



UK – Enlist Soybeans Weed Control | Princeton, KY | No-till | Planted June, 8 2020

Applications: PRE – June 8, 2020 | V2-V3 – July 7, 2020 | Data 28 Days After Application

Weed	Enlist One® herbicide + Glufosinate Weed Control
Marestail	98%
Giant ragweed	100%
Large crabgrass	77%
Palmer amaranth	100%

To learn more about how the Enlist® weed control system can help you take control of weeds like never before, visit Enlist.com. Find the most current list of qualified tank-mix products for Enlist One at EnlistTankMix.com.



COLEX·D® technology

HERBICIDE



Visit us at Enlist.com

®/™ Trademarks of Corteva Agriscience and its affiliated companies.

This reference guide is not intended as a substitute for the product label for the product(s) referenced herein. Product labels for the above product(s) contain important precautions, directions for use, and product warranty and liability limitations, which must be read before using the product(s). Applicators must be in possession of the product label(s) at the time of application. Always read and follow all label direction and precautions for use when using any pesticide alone or in tank-mix combinations.

Not all products are for sale, distribution or use in all states or counties. Contact your state pesticide regulatory agency to determine if a product is registered for sale or use in your area. The transgenic soybean event in Enlist E3® soybeans is jointly developed and owned by Corteva Agriscience LLC and MS Technologies, LLC. Enlist One herbicide is the only 2,4-D product authorized for use in Enlist crops. Consult Enlist herbicide labels for weed species controlled. Always read and follow label directions. ©2025 Corteva. 029496 CCR (05/25)

